

1. Please use Internet Explorer 9.0 or later and go to <http://access.khnetwork.org>

2. Then click the 'VPN User Access' link

KETTERING
Health Network.


Latest News
No news is good news!

Remote Access Services

Secure Access Portal (SAP)

If you have an RSA SecurID, **click the image below to access the Secure Access Portal (SAP)**.

The SAP provides access to both network and clinical applications (**such as EpicCareLink, Epic, Oblink and Remote Desktop**) that require a high level of security.



[Register your new VIP token](#)

Other Resources

- [Employee Portal](#)
- [iCD-10 Training Info](#)
- [iSupport Self Service](#)
- [KH Network Physician Orders](#)
- [KHN Epic PLY Access](#)
- [Mobile Usage Agreement](#)
- [Outlook Web Access](#)
- [Staffing & Scheduling \(S&S\)](#)
- [Time & Attendance \(T&A\)](#)
- [VDI Remote Access](#)
- **[VPN User Access](#)**

© 2016, Kettering Health Network [Notice of Privacy Practice](#) [Terms of use](#)

3. Next you will be presented with the 'VPN User Access' page.

4. In the 'Username' field type in your username: (ex: DRXXXXX or KXXXXX)

5. In the 'Password+Passcode' field type in your password followed by the six character 'Symantec VIP token code'. (example: *password543632*)

<https://vpn.ketteringhealth.org/+CSCOE+/logon.htm>

Account Request Form http--teams-dept-inform... IP Location Finder - Geolo... Networking Home Page abouttabs

Kettering Health NetworkSM

For Life[®]

VPN User Access

Log in Form

Username:

Password+Passcode:

Log In

Login Instructions:

1. Enter your KHN Username or DR Number in the 'Username' field.
2. Enter your network password in the 'Password' field. This password is the same as the one used to access KHN Workstations, KHN Intranet, and/or Outlook Web Access.
3. Enter your Symantec VIP Passcode at the end of your Password. The Passcode will be 6 digits and should be added at the end of your password. Example: "passwordpasscode"

NOTE: If you have problems with your login or need assistance accessing this site, please contact the KHN I.S. Support Center @ 937-384-4500.

Notice:

This system is the property of KHN and is provided to carry out the functions related to the operations of KHN. All activity related to information contained on or able to be accessed by this system may be monitored, intercepted, recorded, read, copied captured, and disclosed in any manner by personnel authorized by KHN. There is no right to privacy in this system. System personnel may give to law enforcement officials any potential evidence of a crime found on this system.

Use of this system by any user, authorized or unauthorized, constitutes consent to the monitoring, interception, recording, reading, copying capture and disclosure.

© 2007, Kettering Health Network [Notice of Privacy Practice](#) [Terms of use](#)

6. You may get a dialog popup that states it wants to run 'Cisco AnyConnect Secure Mobility' Select 'Run control'

The screenshot shows an Internet Explorer browser window with the address bar displaying `https://vpn.khnetwork.org/CACHE/stc/1/index.html`. The page content is titled "AnyConnect Secure Mobility Client" and is divided into two main sections:

- WebLaunch:** A sidebar menu with the following items:
 - Platform Detection
 - ActiveX
 - Java Detection
 - Java
 - Download
 - Connected
- Manual Installation:** A main content area with the following text:

Web-based installation was unsuccessful. If you wish to install the Cisco AnyConnect Secure Mobility Client, you may download an installer package.

Install module(s) below in the listed sequence. Platforms supported: Windows Desktop

[AnyConnect VPN](#)

Alternatively, [retry](#) the automatic installation.

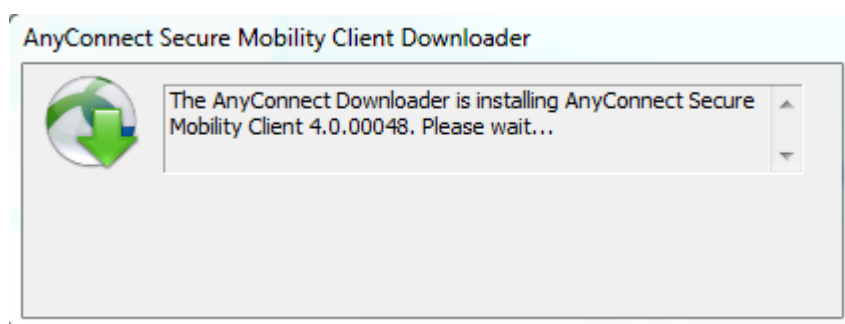
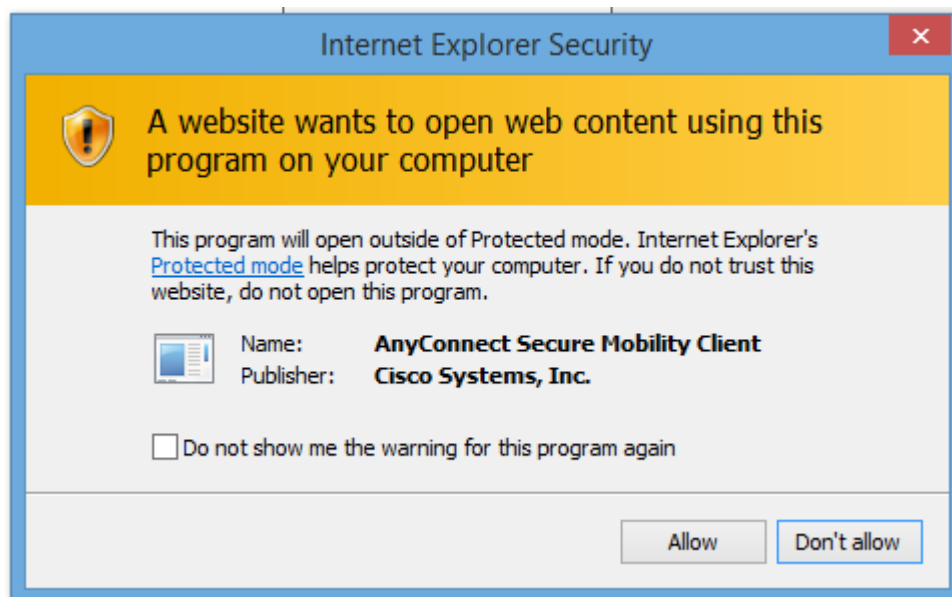
Buttons:

At the bottom of the browser window, a security warning dialog is displayed with the following text:

This webpage wants to run 'Cisco AnyConnect Secure Mobility Client Web Cont...' which isn't compatible with Internet Explorer's enhanced security features. If you trust this site, you can disable Enhanced Protected Mode for this site and allow the control to run.

Buttons:

7. You may also be presented with an 'Internet Explorer Security' dialog box, select 'Allow'



8. You should be presented with a webpage that shows that you have been connected.



AnyConnect Secure Mobility Client

WebLaunch

- Platform Detection
- ActiveX
- Java Detection
- Java
- Download
- Connected

Connection Established

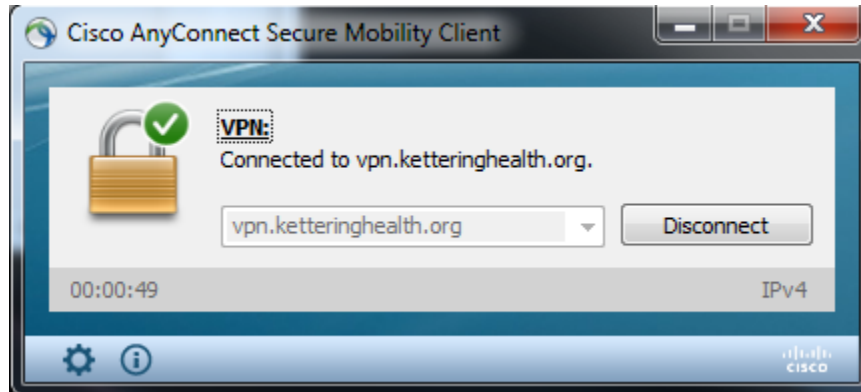
The Cisco AnyConnect Secure Mobility Client has successfully connected.

The connection can be controlled from the tray icon, circled in the image below:



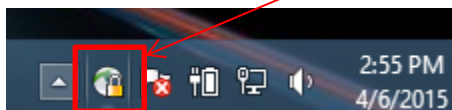
[Help](#) [Download](#)

9. Next you should see the following Cisco Dialog box.

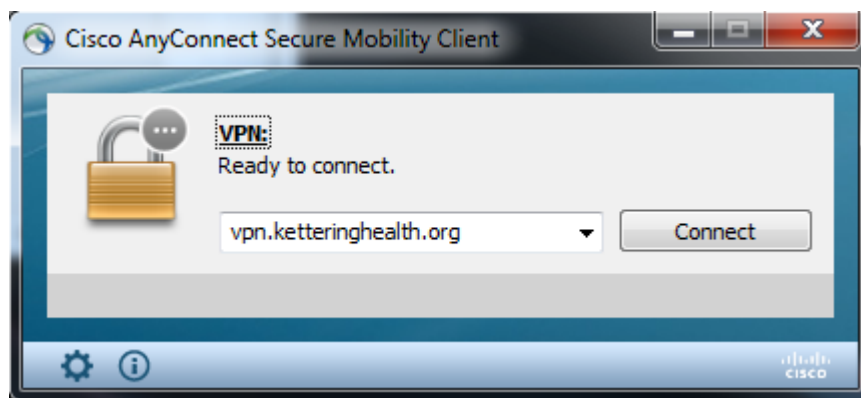
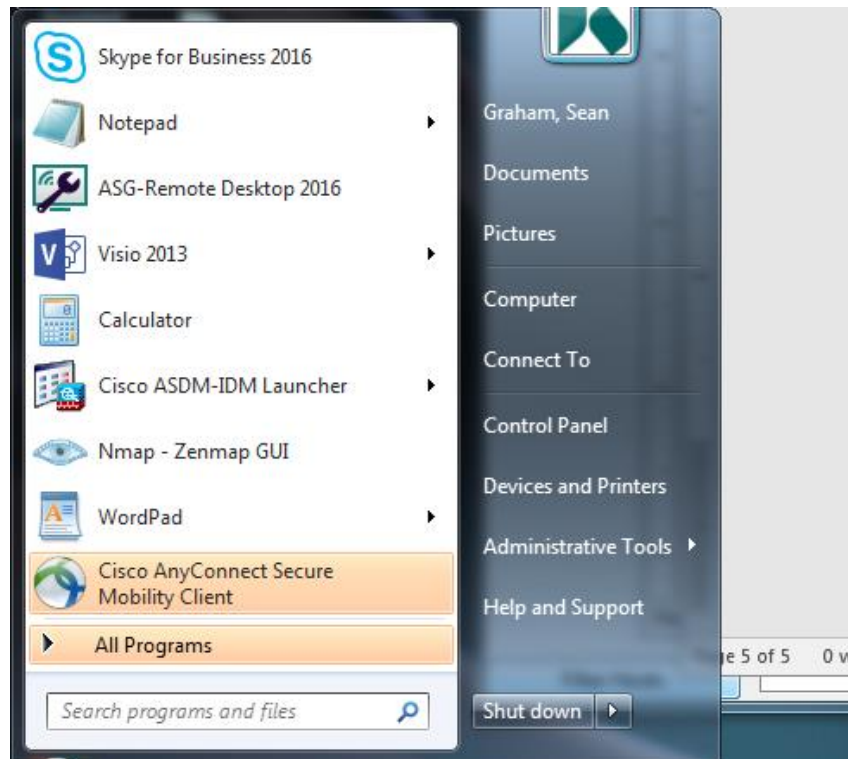


10. At this point, you should have an established VPN connection and can launch your application that should reach out and connect to KHN resources.

11. Down on the Task bar, you should see a circle with a lock. If not it might be hidden. You can also find the Cisco application by finding the program 'Cisco AnyConnect Secure Mobility Client' from the start menu. Once you have completed the remote access work, you will want to click disconnect from the Cisco AnyConnect Client by clicking '**Disconnect**'.



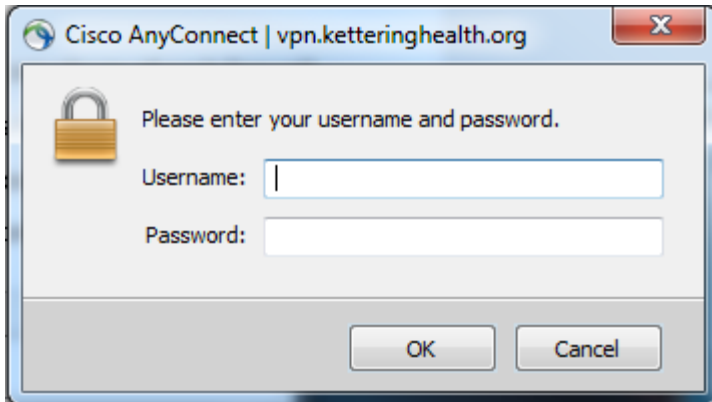
12. To Establish a VPN connection again, you can follow the steps above or you can find the 'Cisco AnyConnect Secure Mobility Client' program on your workstation and launch the program.



13. Click 'Connect'

In the '**Username**' field type in your username: (ex: DRXXXXX or KXXXXX)

In the '**Password+Passcode**' field type in your password followed by the six character 'Symantec VIP token code'. (example: *password543632*)



14. Once connected you should see the following dialog box. Click 'Disconnect' when you are finished.

